



PARK & FACILITY RENTALS

www.pvrpd.org

TABLE OF CONTENTS

How to Reserve	3	Sports Courts & Arenas	37
Master Fee Schedule	4	• Basketball Courts	38
Picnic Areas	5	• Tennis Courts	39
• Arneill Ranch	6-7	• Volleyball Courts	40
• Bob Kildee	8-9	• Roller Hockey	41
• Camarillo Grove	10-14	• R/C Car Track	42
• Community Center	15	• Las Posas	43
• Mel Vincent	16	Equestrian	
• Mission Oaks	17-19	• Skate Park	44
• Nancy Bush	20-22	Indoor Facilities	45
• Pitts Ranch	23-24	Community Center	
• Valle Lindo	25-27	• Auditorium	46-48
Park Space	28	• Classrooms	49-55
Sports Fields	29	• Senior Center	56-58
• Bob Kildee	30	Dos Caminos	59
• Freedom	31-32	Freedom Center	60-62
• Pitts Ranch	33	Pleasant Valley	63
• Pleasant Valley	34-35	Fields	
Fields		Aquatic Center	64-66
• Mission Oaks	36		



How to Reserve

1. Review rental brochure to determine which facility and/or park you would like to reserve. Questions? Call 805.482.1996.
2. Fill out the Permit Application (download on our website).
3. Submit application to csr@pvrpd.org or drop it off at our office located on 1605 E. Burnley St., Camarillo.
4. PVRPD staff will review your application, check availability, and contact you to discuss your reservation.
 - A completed application does not guarantee a reservation.
 - Reservation payments must be completed in-person or online through our reservation platform, Amilia Smart Rec. Our staff are available to assist, but we are unable to take payments over the phone.
5. Upon approval, insurance requirements will be requested based on the facility and type of rental.
6. All rental fees are located on the Master Fee Schedule page.

2025-2026 Master Fee Schedule

View all fees in the Master Fee Schedule.

FEES

The basic rate of application fees will be charged according to the District Master Fee Schedule.

- Indoor Facility - During normal hours of operation, rates include setup and cleanup of tables and chairs.
 - Additional fees apply for security staffing, additional custodial services and other services requested or identified by the District in advance of use.
 - Additional fees apply for after-hours staffing when reservation is outside of normal hours of operation including holidays.
- Picnic Area - During normal hours of operation, rates include existing site amenities such as picnic tables, barbecue (where available) and outdoor restrooms. Rates do not include supervision or setup of tables and chairs. Use of Non-District equipment, i.e., tables, chairs, barbeques, etc. are not permitted without written approval by the General Manager or designee(s).

ADDITIONAL CHARGES OVER BASIC RATE

Additional charges may be levied over the basic rate as defined in Section I. FEES and under the following conditions:

- Non-residents will be subject to a rate increase of 25%.
- Non-Sufficient Funds charges will apply for returned checks.
- When alcohol is being served or sold at a function.
- When a reservation is considered a Special Event (refer to Special Event Policy).
- For applicant initiated reservation changes, including cancellations.
- For security staffing when required. District will arrange with approved vendors.
- When a facility is not normally open and District staffing is required.
- When District staff is required for facility control.
- When facility damage and/or liability insurance fees are required.
- To cover the cost of dumpsters, portable toilets, or other additional equipment and/or resources to accommodate the rental.

The determination of requirements for additional staffing and associated charges shall be made by the General Manager or designee(s). See District Master Fee Schedule for rates.

Picnic Areas

*Reservations apply to picnic areas *only*. Other park features are available to the public during picnic area rentals.

The following list provides general information for all rentals. To ensure safe, efficient, and equitable use of District property, all facility renters are required to review and acknowledge the District's Ordinance 8 and General Use Policy in full.

Alcohol

Consumption or sale of alcohol is only permitted with prior District approval as a part of the rental request process. Additional requirements such as security and/or other government agency permits or licenses may apply.

Amplified Sound

Sound amplification devices, including radios, public address systems, musical instruments, or similar, are not permitted; circumstantial exceptions may be made with prior written approval.

Barbecues

Personal barbecues are not authorized; only use of District provided charcoal barbecues are allowed.

Cleaning Deposit / Damage to Property

Refundable cleaning deposits will be retained when facilities are not returned in their original condition or are left with overflowing trash or excess debris. Cleaning or restoration charges may apply as a result of damages or excessive wear and tear.

Fees

Fees for rental permits are listed in the District Fee Schedule. There is a \$25 processing fee to process all permit applications.

Smoking

All District parks, facilities, and open spaces are smoke-free properties. All persons are strictly prohibited from smoking.

Vendors

All vendors must obtain a District use permit and are subject to applicable fees, insurance requirements, and external agency permits.

Picnic Area sizes are shown with the following icons



Small



Medium



Large



Extra Large



Arneill Ranch Park

Area 1 **M**

6-hour minimum
60 person capacity

Picnic Area Features



BBQ

Park Features

- ✓ Track
- ✓ Restrooms
- ✓ Open Grass Areas
- ✓ Playground
- ✓ Fitness Equipment

1301 Sweetwater Ave.



Arneill Ranch Park

Area 2 **S**

6-hour minimum
20 person capacity

Picnic Area Features



BBQ

Park Features

- ✓ Track
- ✓ Restrooms
- ✓ Open Grass Areas
- ✓ Playground
- ✓ Fitness Equipment

1301 Sweetwater Ave.



Bob Kildee Community Park

Area 1 L

6-hour minimum
200 person capacity

Picnic Area Features



BBQ



Pergola



Sink



Electricity

Park Features

- Restrooms
- Open Grass Areas
- Playground
- Skatepark
- Tennis & Pickleball Courts

1030 Temple Ave.



Bob Kildee Community Park

Area 2 **M**

6-hour minimum
60 person capacity

Picnic Area Features



BBQ

Park Features

- ✓ Restrooms
- ✓ Open Grass Areas
- ✓ Playground
- ✓ Skatepark
- ✓ Tennis & Pickleball Courts



1030 Temple Ave.



Camarillo Grove Park

Area 1 **XL**

6-hour minimum
300 person capacity

Picnic Area Features



BBQ



Pavilion



Sink



Electricity

Park Features

- ✓ Restrooms
- ✓ Open Grass Areas
- ✓ Playground
- ✓ Parking Fee
- ✓ Horseshoe Pits
(horseshoes not included)
- ✓ Dog Park
- ✓ Hiking Trails
- ✓ Nature Center

6968 E. Camarillo
Springs Rd.



Camarillo Grove Park

Area 2 L

6-hour minimum
200 person capacity

Picnic Area Features



BBQ



Pergola



Electricity

Park Features

- ✓ Restrooms
- ✓ Open Grass Areas
- ✓ Playground
- ✓ Parking Fee
- ✓ Horseshoe Pits
(horseshoes not included)
- ✓ Dog Park
- ✓ Hiking Trails
- ✓ Nature Center

6968 E. Camarillo
Springs Rd.



Camarillo Grove Park

Area 3 **M**

6-hour minimum
60 person capacity

Picnic Area Features



BBQ

Park Features

- ✓ Restrooms
- ✓ Open Grass Areas
- ✓ Playground
- ✓ Parking Fee
- ✓ Horseshoe Pits (horseshoes not included)
- ✓ Dog Park
- ✓ Hiking Trails
- ✓ Nature Center

6968 E. Camarillo
Springs Rd.



Camarillo Grove Park

Area 4 **M**

6-hour minimum
60 person capacity

Picnic Area Features



BBQ



Pavillion

Park Features

- ✓ Restrooms
- ✓ Open Grass Areas
- ✓ Playground
- ✓ Parking Fee
- ✓ Horseshoe Pits (horseshoes not included)
- ✓ Dog Park
- ✓ Hiking Trails
- ✓ Nature Center

6968 E. Camarillo
Springs Rd.



Camarillo Grove Park

Area 5 **M**

6-hour minimum
60 person capacity

Picnic Area Features



BBQ



Electricity

Park Features

- ✓ Restrooms
- ✓ Open Grass Areas
- ✓ Playground
- ✓ Parking Fee
- ✓ Horseshoe Pits
(horseshoes not included)
- ✓ Dog Park
- ✓ Hiking Trails
- ✓ Nature Center

6968 E. Camarillo
Springs Rd.



Community Center Park

Area 1



6-hour minimum

40 person capacity

Picnic Area Features



BBQ



Pergola

Park Features

- ✓ Restrooms
- ✓ Open Grass Areas
- ✓ Playground
- ✓ Fitness Equipment
- ✓ Electric Vehicle Charging Stations

1605 E. Burnley St.



Mel Vincent Park

Area 1



6-hour minimum
20 person capacity

Picnic Area Features



Pavilion

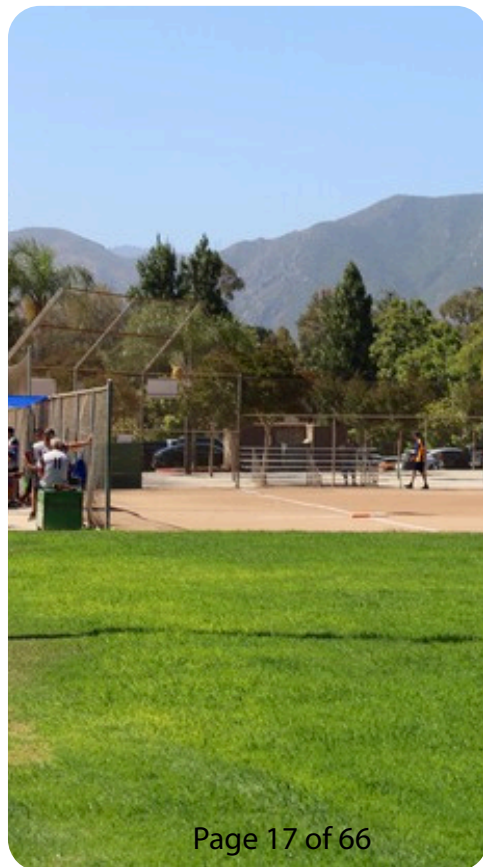


Park Features

- ✓ Restrooms
- ✓ Open Grass Areas
- ✓ Playground
- ✓ Fitness Equipment
- ✓ Sand Volleyball (volleyball not included)



668 Calistoga Rd.



Mission Oaks Park

Area 1 **M**

6-hour minimum
60 person capacity

Picnic Area Features



BBQ



Pavillion



Sink

Park Features

- ✓ Restrooms
- ✓ Open Grass Areas
- ✓ Playground
- ✓ Tennis Courts
- ✓ Softball Fields

5501 Mission Oaks Blvd.



Mission Oaks Park

Area 2 **M**

6-hour minimum
60 person capacity

Picnic Area Features



BBQ



Pavillion



Sink

Park Features

- ✓ Restrooms
- ✓ Open Grass Areas
- ✓ Playground
- ✓ Tennis Courts
- ✓ Softball Fields

5501 Mission Oaks Blvd.



Mission Oaks Park

Area 3 **M**

6-hour minimum
60 person capacity

Picnic Area Features



BBQ



Pavillion



Sink

Park Features

- ✓ Restrooms
- ✓ Open Grass Areas
- ✓ Playground
- ✓ Tennis Courts
- ✓ Softball Fields

5501 Mission Oaks Blvd.



Nancy Bush Park

Area 1 **M**

6-hour minimum
60 person capacity

Picnic Area Features



BBQ

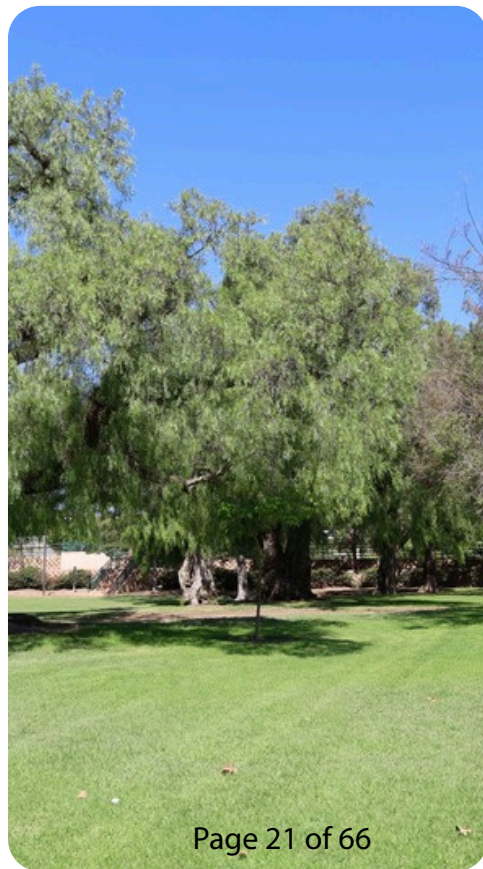


Park Features

- ✓ Restrooms
- ✓ Open Grass Areas
- ✓ Playground



1150 Bradford Ave.



Nancy Bush Park

Area 2 S

6-hour minimum
40 person capacity

Picnic Area Features



BBQ

Park Features

- ✓ Restrooms
- ✓ Open Grass Areas
- ✓ Playground

1150 Bradford Ave.



Nancy Bush Park

Area 3 **S**

6-hour minimum
20 person capacity

Picnic Area Features



BBQ

Park Features

- ✓ Restrooms
- ✓ Open Grass Areas
- ✓ Playground

1150 Bradford Ave.



Pitts Ranch Park

Area 1 **M**

6-hour minimum
60 person capacity

Picnic Area Features



BBQ



Pavillion



Park Features

- ✓ Restrooms
- ✓ Open Grass Areas
- ✓ Playground
- ✓ Basketball Court
- ✓ Tennis/Pickleball Courts
- ✓ Rentable $\leq 10U$ Softball Field



1400 Flynn Rd.



Pitts Ranch Park

Area 2 S

6-hour minimum
40 person capacity

Picnic Area Features



BBQ



Pavillion



Park Features

- ✓ Restrooms
- ✓ Open Grass Areas
- ✓ Playground
- ✓ Basketball Court
- ✓ Tennis/Pickleball Courts
- ✓ Rentable $\leq 10U$ Softball Field

1400 Flynn Rd.



Valle Lindo Park

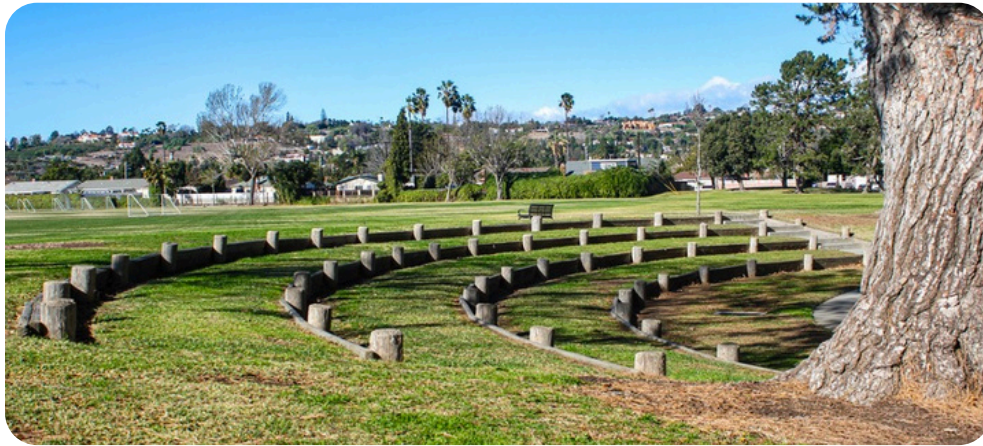
Area 1 **M**

6-hour minimum
60 person capacity

Picnic Area Features

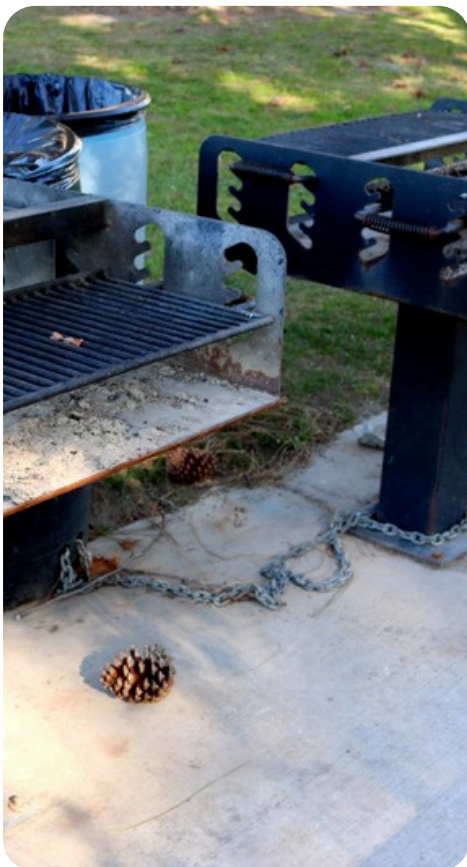


BBQ



Park Features

- ✓ Restrooms
- ✓ Open Grass Areas
- ✓ Playground
- ✓ Tennis Courts
- ✓ Amphitheater
- ✓ Park Space



889 Aileen St.



Valle Lindo Park

Area 2



6-hour minimum
40 person capacity

Picnic Area Features



BBQ



Pergola



Park Features

- ✓ Restrooms
- ✓ Open Grass Areas
- ✓ Playground
- ✓ Tennis Courts
- ✓ Amphitheater
- ✓ Park Space



889 Aileen St.



Valle Lindo Park

Area 3 **S**

6-hour minimum
20 person capacity

Picnic Area Features



BBQ



Pergola

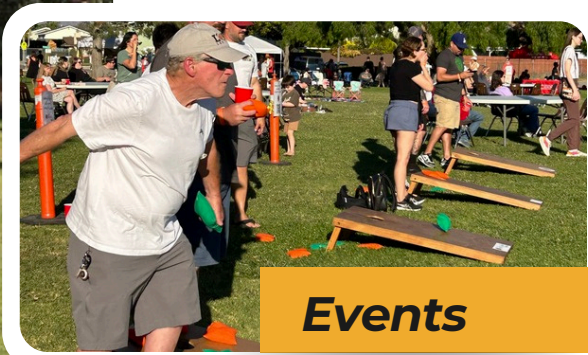
Park Features

- ✓ Restrooms
- ✓ Open Grass Areas
- ✓ Playground
- ✓ Tennis Courts
- ✓ Amphitheater
- ✓ Park Space

889 Aileen St.

Park Space

Park Space is reserved at a 2-hour minimum. During a reservation of a picnic area, if use of park space beyond the immediate area is needed, a Large Park Space Rental fee will be charged. Contact the district office for more information.



Park Spaces are available in the following sizes



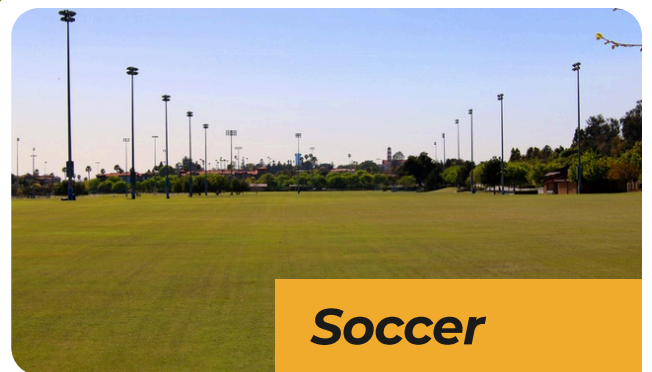
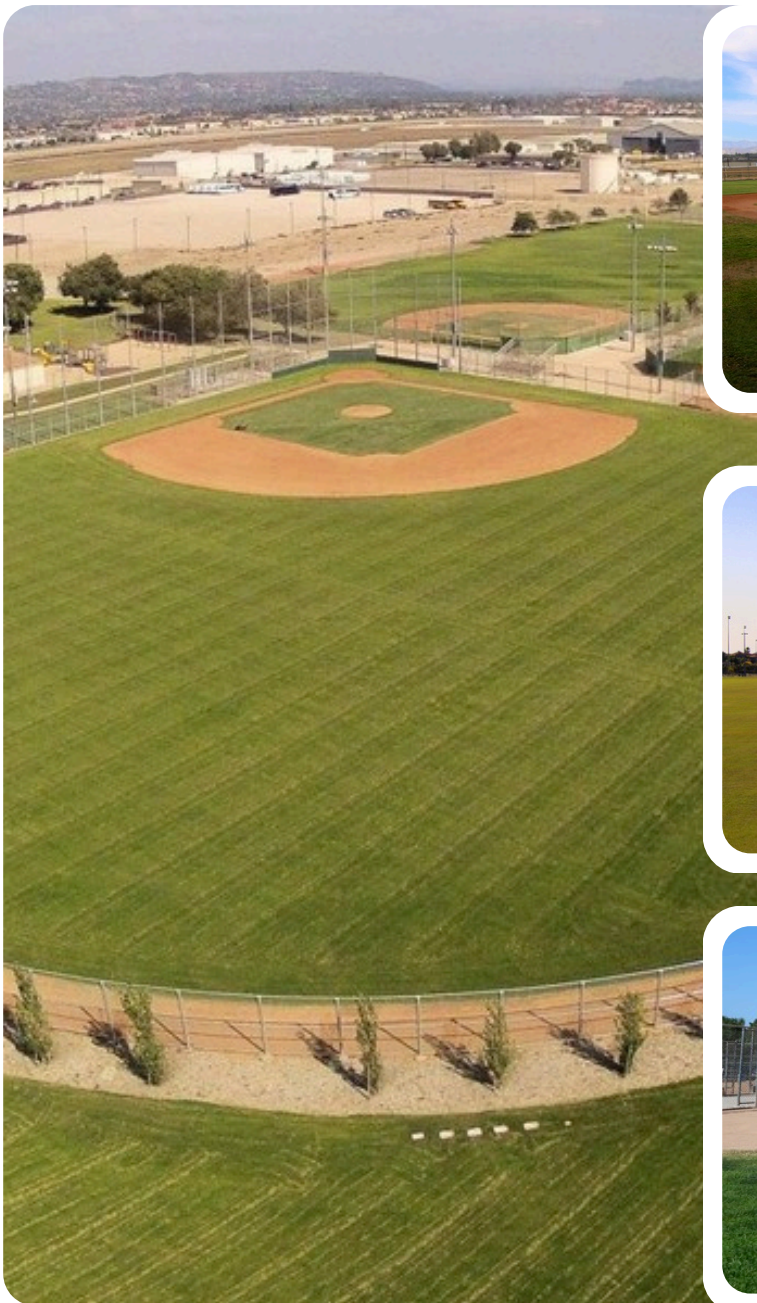
Small



Large

Sports Fields

Sports Fields are reserved at a 2 hour minimum and activities are limited to each facility's intended use. Please contact us for lighting rates and requests for special use exceptions.





Bob Kildee Community Park

Baseball Field 1

2-hour minimum

Park Features

- ✓ Restrooms
- ✓ Open Grass Areas
- ✓ Playground
- ✓ Skatepark
- ✓ Rentable Field Lighting

1030 Temple Ave.



Freedom Park *Friendship Field*

2-hour minimum

Adaptive Use Only

Park Features

✓ Restrooms



275 E. Pleasant Valley
Rd.



Freedom Park Baseball Fields

2-hour minimum

Park Features

- ✓ Restrooms
- ✓ Open Grass Areas
- ✓ Electric Vehicle Charging Stations
- ✓ Dog Park
- ✓ Rentable Field Lighting (Fields 1-4, Veterans)



275 E. Pleasant Valley
Rd.



Pitts Ranch Park

Softball Field

2-hour minimum

Park Features

- ✓ Restrooms
- ✓ Open Grass Areas
- ✓ Playground
- ✓ Basketball Court
- ✓ Tennis/Pickleball Courts
- ✓ Rentable Pavilions
- ✓ <10u, Fielding Only

1400 Flynn Rd.



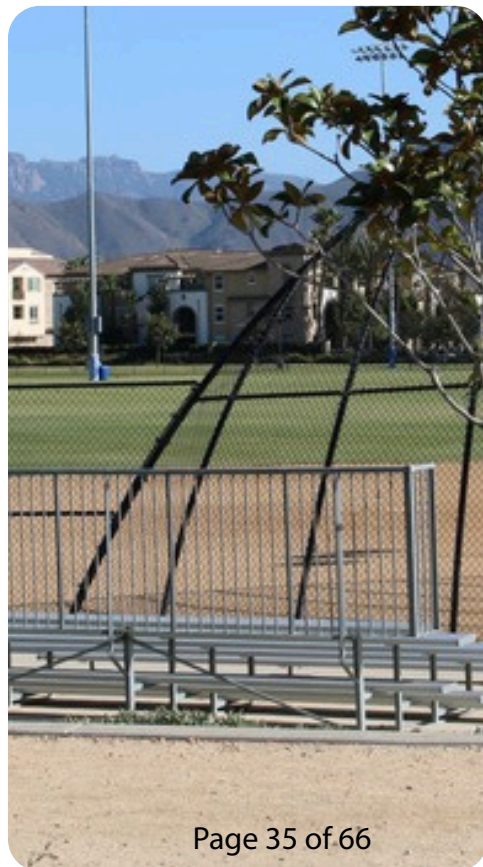
Pleasant Valley Fields Soccer Fields

2-hour minimum

Park Features

- ✓ Restrooms
- ✓ Open Grass Areas
- ✓ Playground
- ✓ Electric Vehicle Charging Stations

150 Westpark Ct.



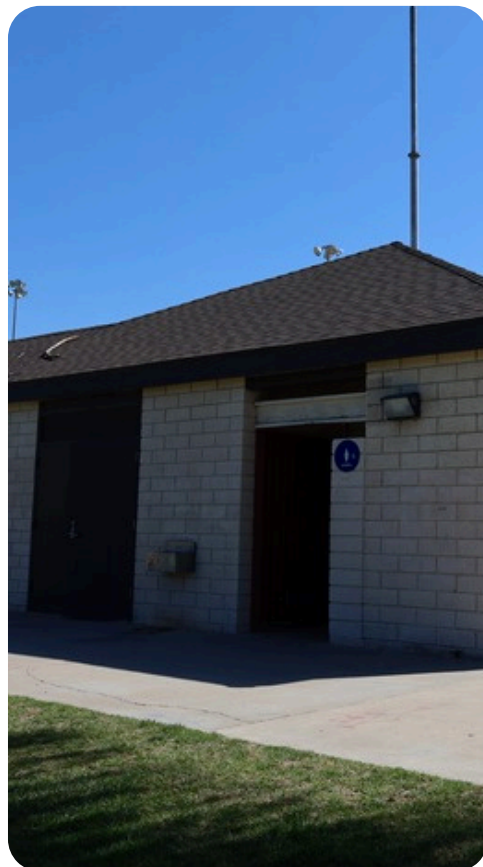
Pleasant Valley Fields Softball Fields

2-hour minimum

Park Features

- ✓ Restrooms
- ✓ Open Grass Areas
- ✓ Playground
- ✓ Electric Vehicle Charging Stations

150 Westpark Ct.



Mission Oaks Park

Softball Fields

2-hour minimum

Park Features

- ✓ Restrooms
- ✓ Open Grass Areas
- ✓ Playground
- ✓ Rentable Pavilions

5501 Mission Oaks Blvd

Sports Courts & Arenas

Sports Fields are reserved at a 2 hour minimum and activities are limited to each facilities intended use. Please contact us for special use exceptions.





Various District Parks *Basketball Courts*

2-hour minimum
Full-sized courts
only

Parks

- ✓ Lokker Park
- ✓ Pitts Ranch Park
- ✓ Ran Rancho Park



Various District Parks *Tennis Courts*

2-hour minimum

Parks

- ✓ Bob Kildee Community Park
- ✓ Mission Oaks Park
- ✓ Pitts Ranch Park
- ✓ Springville Park
- ✓ Valle Lindo Park

Various District Parks *Pickleball Courts*

2-hour minimum

Parks

- ✓ Bob Kildee Community Park*
- ✓ Pitts Ranch Park**
- ✓ Springville Park**

**Reservations available on Sat/Sun only.*

***No reservations available.*



Various District Parks Volleyball Courts

2-hour minimum

Parks

- ✓ Laurelwood Park*
- ✓ Lokker Park*
- ✓ Mel Vincent Park
- ✓ Mission Oaks Park*
- ✓ Quito Park*
- ✓ Woodside Park*

**Net available at the District Office*



Freedom Park Roller Hockey Arena

2-hour minimum

Park Features

- ✓ Restrooms
- ✓ Electric Vehicle Charging Stations



530 Convair St.



Freedom Park R/C Car Track

2-hour minimum

Park Features

- ✓ On-Road Track
- ✓ Off-Road Track
- ✓ Restrooms
- ✓ Electric Vehicle Charging Stations



275 E. Pleasant Valley
Rd.



Las Posas Equestrian Center *Arena*

2-hour minimum

Park Features

- ✓ Arena
- ✓ Hiking Trail



2084 Via Veneto

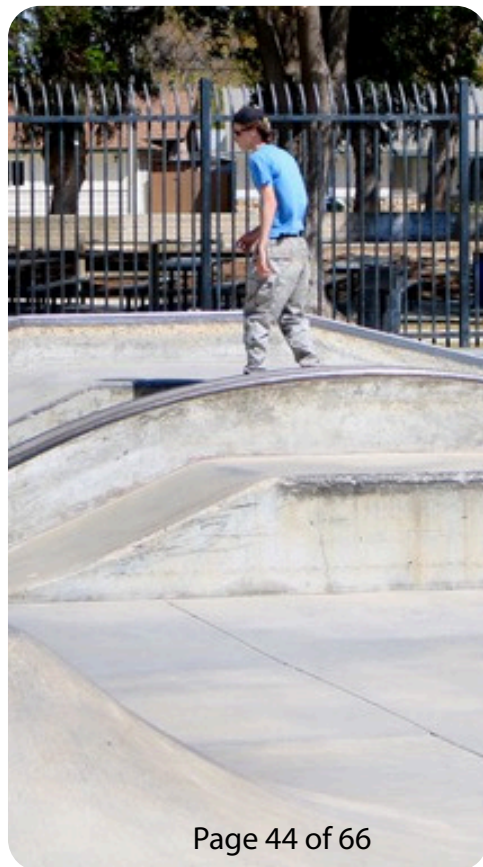


Pleasant Valley Skate Park

2-hour minimum

Park Features

- ✓ Restrooms
- ✓ Open Grass Areas
- ✓ Playground
- ✓ Reservable Pavilions



1030 Temple Ave.

Indoor Facilities

The following list provides general information for all rentals. To ensure safe, efficient, and equitable use of District property, all facility renters are required to review and acknowledge the District's Ordinance 8 and General Use Policy in full.

Alcohol

Consumption or sale of alcohol is only permitted with prior District approval as a part of the rental request process. Additional requirements such as security and/or other government agency permits or licenses may apply.

Amplified Sound

Sound amplification devices, including radios, public address systems, musical instruments, or similar, are not permitted; circumstantial exceptions may be made with prior written approval.

Cleaning Deposit / Damage to Property

Refundable cleaning deposits will be retained when facilities are not returned in their original condition or are left with overflowing trash or excess debris. Cleaning or restoration charges may apply as a result of damages or excessive wear and tear.

Liability Insurance

All indoor facility reservations require proof of general liability insurance. Event insurance is available for purchase through the District.

Fees

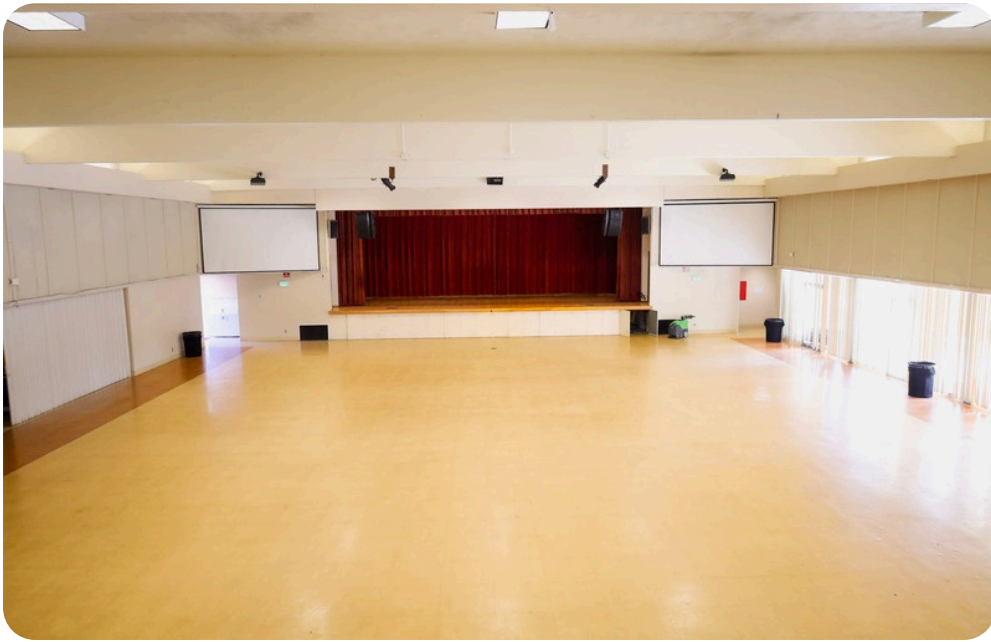
Fees for rental permits are listed in the District Fee Schedule. There is a \$25 processing fee to process all permit applications.

Smoking

All District parks, facilities, and open spaces are smoke-free properties. All persons are strictly prohibited from smoking.

Vendors

All vendors must obtain a District use permit and are subject to applicable fees, insurance requirements, and external agency permits.



Community Center Park Auditorium

4 hour minimum
500 person capacity

Facility Features

- ✓ Restrooms
- ✓ Stage
- ✓ Dressing Rooms
- ✓ Rentable Courtyard & Kitchen



Park Features

- ✓ Restrooms
- ✓ Electric Vehicle Charging Stations
- ✓ Playground
- ✓ Reservable Picnic Area
- ✓ Open Grass Areas



1605 E. Burnley St.



Community Center Park

Auditorium Courtyard

2 hour minimum
100 person capacity

Facility Features

- ✓ Rentable Auditorium & Kitchen

Park Features

- ✓ Restrooms
- ✓ Electric Vehicle Charging Stations
- ✓ Playground
- ✓ Reservable Picnic Area
- ✓ Open Grass Areas

1605 E. Burnley St.



Community Center Park Kitchen

2 hour minimum
40 person capacity

Facility Features

- ✓ Gas Stove / Oven
- ✓ Refrigerator
- ✓ Ice Machine
- ✓ Rentable Classrooms & Auditorium

Park Features

- ✓ Restrooms
- ✓ Electric Vehicle Charging Stations
- ✓ Playground
- ✓ Reservable Picnic Area
- ✓ Open Grass Areas

1605 E. Burnley St.



Community Center Park Classroom 1

2 hour minimum
40 person capacity

Facility Features

- ✓ Sink
- ✓ Rentable Courtyard



Park Features

- ✓ Restrooms
- ✓ Electric Vehicle
- ✓ Charging Stations
- ✓ Playground
- ✓ Reservable Picnic Area
- ✓ Open Grass Areas



1605 E. Burnley St.



Community Center Park Classroom 2

2 hour minimum
40 person capacity

Facility Features

- ✓ Sink
- ✓ Rentable Courtyard



Park Features

- ✓ Restrooms
- ✓ Electric Vehicle Charging Stations
- ✓ Playground
- ✓ Rentable Picnic Area
- ✓ Open Grass Areas



1605 E. Burnley St.



Community Center Park Classroom 3

2 hour minimum
40 person capacity

Facility Features

- ✓ Sink
- ✓ Rentable Courtyard



Park Features

- ✓ Restrooms
- ✓ Electric Vehicle Charging Stations
- ✓ Playground
- ✓ Rentable Picnic Area
- ✓ Open Grass Areas



1605 E. Burnley St.



Community Center Park Classroom 4

2 hour minimum
40 person capacity

Facility Features

- ✓ Sink
- ✓ Rentable Courtyard

Park Features

- ✓ Restrooms
- ✓ Electric Vehicle Charging Stations
- ✓ Playground
- ✓ Rentable Picnic Area
- ✓ Open Grass Areas

1605 E. Burnley St.

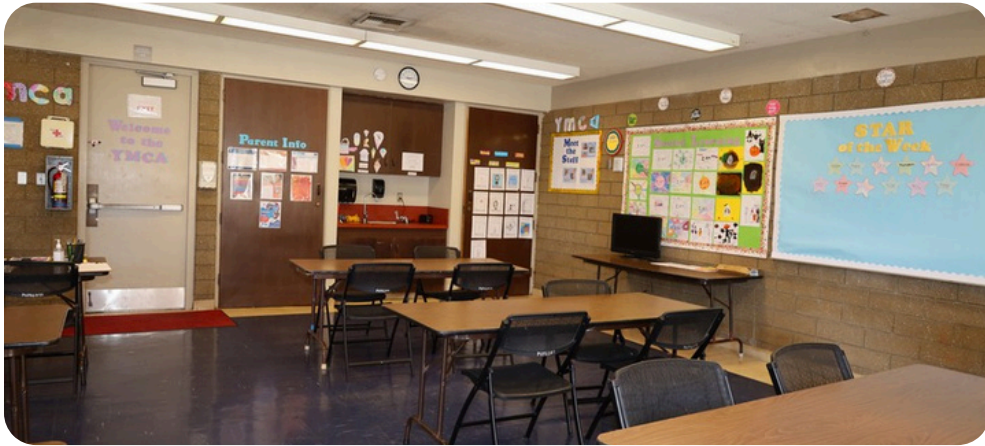


Community Center Park Classroom 5

2 hour minimum
40 person capacity

Facility Features

- ✓ Sink
- ✓ Rentable Courtyard



Park Features

- ✓ Restrooms
- ✓ Electric Vehicle Charging Stations
- ✓ Playground
- ✓ Rentable Picnic Area
- ✓ Open Grass Areas



1605 E. Burnley St.



Community Center Park Classroom 6

2 hour minimum
70 person capacity

Facility Features

- ✓ Mirror Wall
- ✓ A/V Capability
(additional equipment rental fees apply)

Park Features

- ✓ Restrooms
- ✓ Electric Vehicle Charging Stations
- ✓ Playground
- ✓ Rentable Picnic Area
- ✓ Open Grass Areas

1605 E. Burnley St.



Community Center Park Classroom 7

2 hour minimum
70 person capacity

Facility Features

- ✓ Mirror Wall
- ✓ Sink



Park Features

- ✓ Restrooms
- ✓ Electric Vehicle
- ✓ Charging Stations
- ✓ Playground
- ✓ Rentable Picnic Area
- ✓ Open Grass Areas



1605 E. Burnley St.



Community Center Park Senior Center Whole Facility

2 hour minimum
200 person capacity

Facility Features

- ✓ Restrooms
- ✓ Sink
- ✓ A/V Compatibility
(additional equipment rental fees apply)
- ✓ Vending Machine
- ✓ Billiards Tables



Park Features

- ✓ Restrooms
- ✓ Electric Vehicle
- ✓ Charging Stations
- ✓ Playground
- ✓ Rentable Picnic Area
- ✓ Open Grass Areas



Restrictions

- ✓ Food only permitted if served outside of the building. Additional cleaning fees may apply for spills or stains.

✓ Cups must have lids.
1605 E. Burnley St.



Community Center Park Senior Center

Multi-purpose Room
2 hour minimum
130 person capacity

Facility Features

- ✓ Restrooms
- ✓ Sink
- ✓ A/V Compatibility
(additional equipment rental fees apply)

Park Features

- ✓ Restrooms
- ✓ Electric Vehicle Charging Stations
- ✓ Playground
- ✓ Rentable Picnic Area
- ✓ Open Grass Areas

Restrictions

- ✓ Food only permitted if served outside of the building. Additional cleaning fees may apply for spills or stains.
- ✓ Cups must have lids.



Community Center Park Senior Center Library Room

2 hour minimum
60 person capacity

Facility Features

- ✓ Restrooms
- ✓ Sink



Park Features

- ✓ Restrooms
- ✓ Electric Vehicle Charging Stations
- ✓ Playground
- ✓ Rentable Picnic Area
- ✓ Open Grass Areas



Restrictions

- ✓ Food only permitted if served outside of the building. Additional cleaning fees may apply for spills or stains.
- ✓ Cups must have lids.

1605 E. Burnley St.



Dos Caminos Park

Building

2 hour minimum
25 person capacity

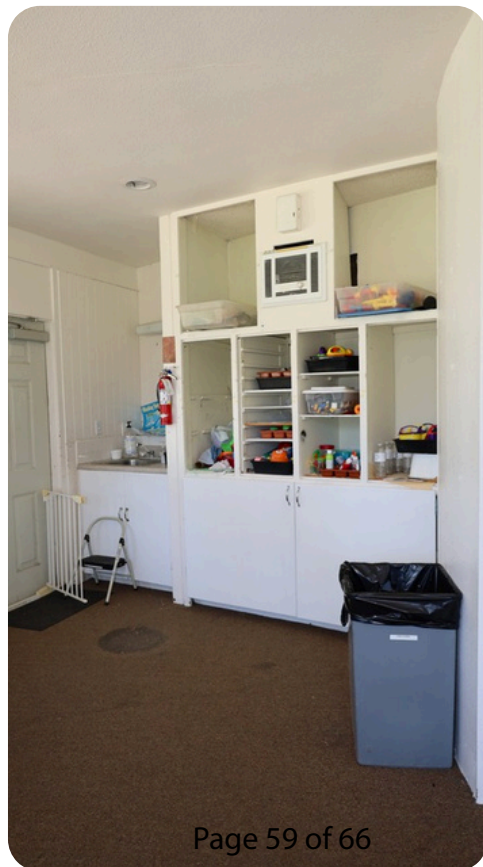
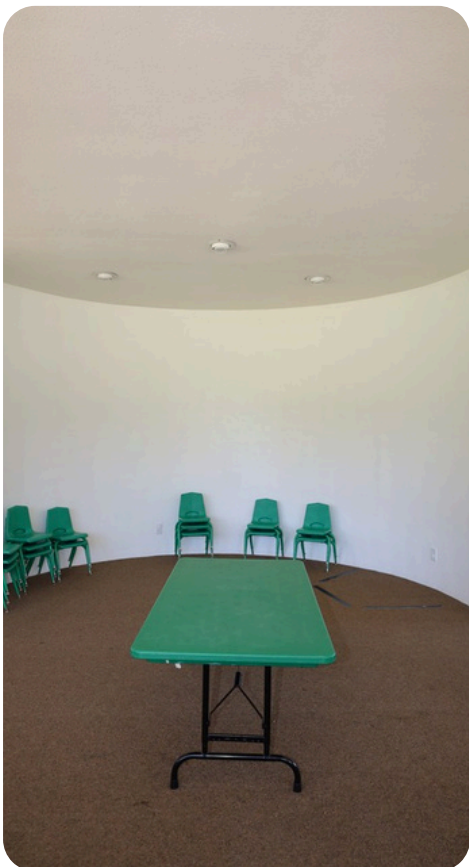
Facility Features

- ✓ Restrooms
- ✓ Sink



Park Features

- ✓ Playground
- ✓ Open grass area
- ✓ BBQ



2198 N. Ponderosa



Freedom Park Freedom Center

4 hour minimum
308 person capacity

Facility Features

- ✓ Restrooms
- ✓ Beverage Bar
- ✓ Stage

Park Features

- ✓ Restrooms
- ✓ Dog Park
- ✓ Rentable Baseball
- ✓ Sports Fields (See Pages 31 & 32)

515 Eubanks St.



Freedom Park Sunshine Room

4 hour minimum
60 person capacity

Facility Features

✓ Restrooms



Park Features

✓ Restrooms

✓ Dog Park

✓ Sports Fields (See
pages 31 & 32)



515 Eubanks St.



Freedom Park Skyway Room

2 hour minimum
20 person capacity

Facility Features

- ✓ Sink
- ✓ Conference Table



Park Features

- ✓ Restrooms
- ✓ Dog Park
- ✓ Sports Fields (See pages 31 & 32)



515 Eubanks St.



Pleasant Valley Fields East Meeting Room

2 hour minimum
60 person capacity

Facility Features

✓ Restrooms

Park Features

✓ Open Grass Areas

✓ Restrooms

✓ Sports Park - Refer to pages 34 & 35

3777 Village at the
Park Dr.

Aquatic Center

The following list provides general information for all rentals. To ensure safe, efficient, and equitable use of District property, all facility renters are required to review and acknowledge the District's Ordinance 8 and General Use Policy in full.

Alcohol / Glass

Consumption or sale of alcohol is not permitted. No glass containers may be brought into the facility.

Cleaning Deposit / Damage to Property

Refundable cleaning deposits will be retained when facilities are not returned in their original condition or are left with overflowing trash or excess debris. Cleaning or restoration charges may apply as a result of damages or excessive wear and tear.

Diving Board / Water Slide

Rules for use of diving board and water slide can be found at <https://www.pvrpd.org/aquatic-center>

Fees

Fees for rental permits are listed in the District Fee Schedule. There is a \$25 processing fee to process all permit applications.

Liability Insurance

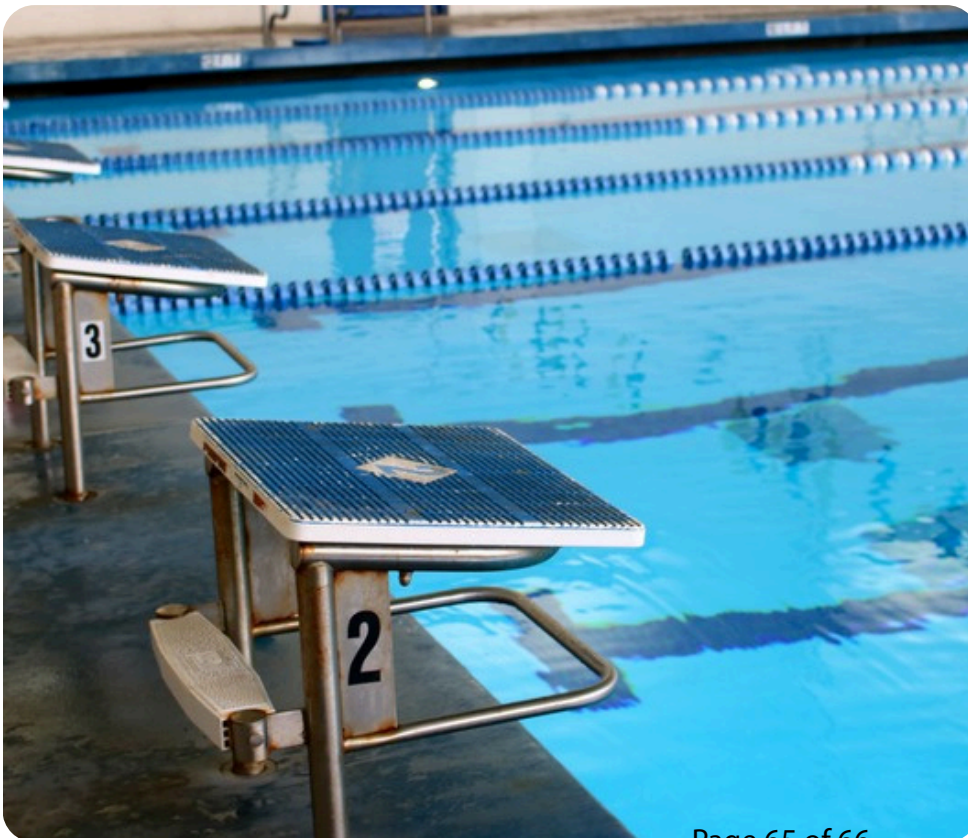
All indoor facility reservations require proof of general liability insurance. Event insurance is available for purchase through the District.

Supervision for children

Active, in-water supervision by parent/guardian may be required for non-swimmers. Parent/Guardian responsible for the reservation may not leave the facility until all minors have been picked up. PVRPD is not responsible for the supervision or care of minor children.

Smoking

All District parks, facilities, and open spaces are smoke-free properties. All persons are strictly prohibited from smoking.



Bob Kildee Community Park

Aquatic Center Whole Facility

2 hour minimum

210 person capacity

Facility Features

- ✔ 65-foot, spiral water slide (Ages 7+)
- ✔ Diving board
- ✔ 8 swimming lanes
- ✔ Outdoor patio
- ✔ Hydraulic lift for easy entry/exit
- ✔ Large stair entry/exit
- ✔ 25 yards in length
- ✔ Heated 81-83 degrees
- ✔ Water depth range 4-12 feet
- ✔ Locker room/Showers
- ✔ Restrooms
- ✔ Indoor and Outdoor Seating

A swim test may be required for swimmers to access the water slide and diving board.

1030 Temple Ave



Bob Kildee Community Park Aquatic Center Per Lane

Facility Features

- ✔ 65-foot, spiral water slide
- ✔ Diving board (Ages 7+)
- ✔ 8 swimming lanes
- ✔ Outdoor patio
- ✔ Hydraulic lift for easy entry/exit
- ✔ Large stair entry/exit
- ✔ 25 yards in length
- ✔ Heated 81-83 degrees
- ✔ Water depth range 4-12 feet
- ✔ Locker room/Showers
- ✔ Restrooms
- ✔ Indoor and Outdoor Seating

A swim test may be required for swimmers to access the water slide and diving board

